



KATSINA DIRECTORATE OF
**INFORMATION &
COMMUNICATIONS
TECHNOLOGY**



iKatsina

Katsina State Digital Public Infrastructure (DPI) Framework

A Strategic Framework for Accelerating Digital Transformation in Katsina State



His Excellency, the Governor of Katsina State

His Excellency, Mal. Dikko Umaru Radda, PhD. CON.

Katsina State is embracing a bold vision of governance in the digital age, one that prioritizes accessibility, security, transparency, and innovation. As we continue to expand access to critical public services, improve internal efficiencies, and create inclusive growth opportunities for all, the development of a robust Digital Public Infrastructure (DPI) becomes not just desirable, but essential.

The iKatsina Framework is our masterplan to lay the digital foundation that will power the next decade of governance in our State. It captures our intent to unify systems, identities, services, and records under a single interoperable and secure ecosystem. With support from strategic partners especially, the Nigeria Governors' Forum (NGF), national agencies, and local innovators, Katsina is taking the lead in demonstrating what state-level DPI can look like when done right, fast, lean, and inclusive.

In line with this, all Ministries, Departments, Agencies, Local Governments, civil society, and development partners invited to join us in building the Katsina of the future.



Director-General, Katsina Directorate of ICT (KATDICT)

Naufal Ahmad – DG Katsina Directorate of ICT

The iKatsina Framework is the product of a statewide visioning process, multiple consultations, and active collaboration with ecosystem stakeholders. It outlines a foundational digital layer that will enable multiple government and citizen-facing applications to thrive, reducing duplication, increasing interoperability, and fostering better service delivery.

Our focus on KRID, KSAuth, MDM+, and the Katsina Unified Government Portal (UGP) ensures that every effort made across the digital ecosystem builds toward a shared and citizen-centric infrastructure. We are working lean and fast, with a 1-year agile rollout that reflects our urgency to deliver impact. Thanks to the strategic guidance of the NGF and key federal and development institutions, our momentum is strong.

Welcome to iKatsina.

INTRODUCTION

iKatsina is the Katsina State DPI Framework and serves as the master blueprint for Katsina's digital transformation. It lays the foundation for deploying secure, interoperable, and citizen-first digital systems that power government services and public sector innovation. iKatsina standardizes Digital Public Infrastructure (DPI) across identity, authentication, payments, and data exchange, anchored by a unified service delivery layer through the Katsina Unified Government Portal (UGP).



OBJECTIVES of iKATSINA

01

Establish a trusted digital identity (KRID) for every resident.

02

Create a secure and unified authentication system (KSAuth) for government staff and services.

03

Power all digital services through the Katsina Unified Government Portal (UGP).

04

Enable interoperability across MDA platforms through shared data and registry infrastructure

05

Support digital financial inclusion using state-enabled payment infrastructure (PayKT).

06

Promote open innovation and local solution development using APIs and shared standards.

07

Strengthen data security, privacy, and digital trust in all government platforms.

CORE COMPONENTS of iKATSINA

01 KRID – Katsina Resident ID

A unique, encrypted 12-digit ID linked to the NIN, auto-syncs with NIMC, supports biometric capture, and powers secure access to digital public services while preventing fraud and duplication.

02 KSAuth – Katsina State Authentication Service

A centralized, role-based authentication system with SSO support, secure API tokens, and KRID-based identity binding, enabling traceable, secure access for both public users and civil servants.

03 UGP – Unified Government Portal

A unified web and mobile gateway for public digital services, offering personalized dashboards, KRID-based profiles, and KSAuth-secured access, with support for USSD, app, and web to ensure inclusivity.

04 Katsina MDM+ (Master Data & Exchange Layer)

A trusted digital backbone that unifies state-level data into golden records, ensures secure, consent-based sharing, and supports interoperability, privacy compliance, and open data policies.

CORE COMPONENTS of iKATSINA

05

PayKT – Financial Infrastructure Layer

Powers digital wallets, government disbursements, and collections through KRID-linked, KSAuth-secured payments, integrated with banks, fintechs, and telcos for secure, auditable transactions across sectors.

06

Registry Service

A comprehensive registry system powered by KRID, covering residents, civil servants, institutions, businesses, assets, and government services, forming the backbone of digital governance.

07

Policy, Governance, and Compliance Layer

Operates under KATDICT governance, adhering to data privacy, protection, and interoperability standards with enforced SLAs, API policies, and cross-sector oversight.

SYNERGEY OF CONTENTS

01 KRID

Foundational digital identity for residents

Used by KSAuth for login; enables personalized access via UGP; tied to PayKT and MDM+

02 KSAuth

Authenticates users (residents, civil servants, institutions)

Issues SSO tokens to UGP; integrated into PayKT APIs; regulates access to sector platforms

03 UGP

User interface layer for accessing services

Uses KSAuth to authenticate; pulls data via MDM+; allows residents to interact with KRID-based services

04 MDM+

Data integrity and sharing layer

Syncs identity from KRID; powers real-time data exchange for UGP and other platforms

05 PAY KT

Payment System

Authenticates transactions using KSAuth; verifies resident ID with KRID; manages financial flow in services

03 REGISTRY

Reference System

Anchored by KRID; consumed by UGP and sector-specific systems; provide data via MDM+

Sector Use Cases

HEALTH

- Patient identity and treatment history via KRID.
- Health worker authentication with KSAuth.
- Digital hospital cards and appointment systems.

EDUCATION

- Digital student records and certificates.
- Teacher verification and employment registry.
- Integration with school payment systems via PayKT.

AGRICULTURE

- Farmer verification and subsidy distribution.
- Agri-wallets and market access tools.
- Input delivery and extension tracking.

SOCIAL WELFARE

- Farmer verification and subsidy distribution.
- Agri-wallets and market access tools.
- Input delivery and extension tracking.

FINANCE

- Credit scoring using PayKT transaction history.
- KYC automation via KRID and NIN handshake..
- Integration with state treasury and budgeting.

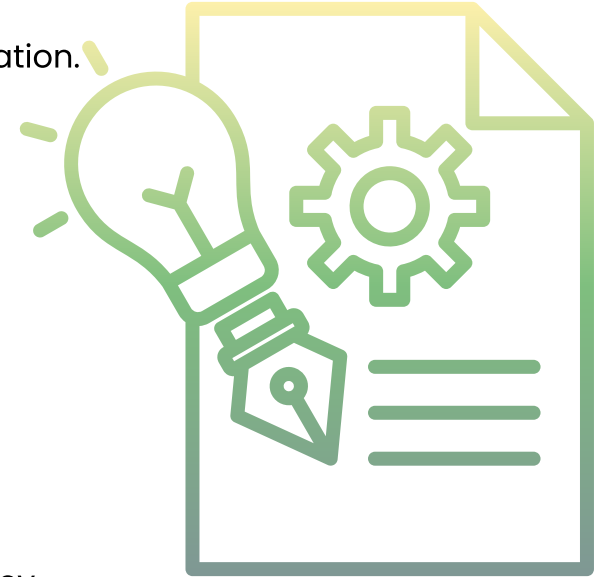
Interoperability and Synergy Across Components

KRID + KSAuth

- 🔑 KRID serves as the identity layer; KSAuth manages authentication and authorization.
- 🔑 All logins and service access requests across MDAs are verified via KSAuth.
- 🔑 KRID is required for registration on all digital services via UGP.

MDM+ + Registry + KRID

- 🔑 KRID data feeds into the resident registry.
- 🔑 MDM+ ensures deduplication, golden record maintenance, and data consistency.
- 🔑 Registries are updated dynamically and serve as data sources for dashboards and APIs.



Interoperability and Synergy Across Components

UGP + All Components

- ① UGP uses KSAAuth for user login and access control.
- ② Pulls registry and data services via MDM+.
- ③ Serves personalized services based on KRID profile.
- ④ Hosts all government e-services and links with PayKT for transactions.

PayKT + KRID

- ① Residents make payments and receive transfers using KRID-linked wallets.
- ② Reduces fraud and leakage by verifying identities before transactions.



Implementation Strategy (1-Year Agile Rollout)

First 6-months: Core Setup

- Infrastructure setup, team formation, and platform architecture.
- KRID pilot enrollment and testing in priority LGAs.
- KSAuth integration with first wave of MDAs.
- UGP launch with core services.

2nd 6-months: Scale and Deepen

- Full rollout of KRID across the state.
- MDM+ implementation and registry integrations.
- All key services onboarded to UGP.
- Developer sandbox and third-party integrations via open APIs.
- Continuous monitoring and citizen feedback loop.



Governance and Institutional Oversight

Lead agency	KATDICT
Strategic Partners	Nigeria Governors’ Forum (NGF), NIMC, NCC, Federal MDAs, Development Partners.
Oversight Body	DPI Standards and Evaluation Task Force.
Advisory Board	Technical, policy, civil society, and community leaders.
Cross-Sector Working Groups:	Health, Education, Agriculture, Commerce, Justice, and Social Welfare.



Conclusion

iKatsina is the operating system for digital governance in Katsina. It combines secure digital identity (KRID), centralized authentication (KSAuth), federated data management (MDM+), and a unified citizen-service interface (UGP), with robust financial integration (PayKT). The 1-year rollout demonstrates our commitment to urgency, inclusivity, and impact. With strong support from the Nigeria Governors' Forum and other national institutions, Katsina is pioneering a replicable model for subnational DPI in Nigeria and beyond.

